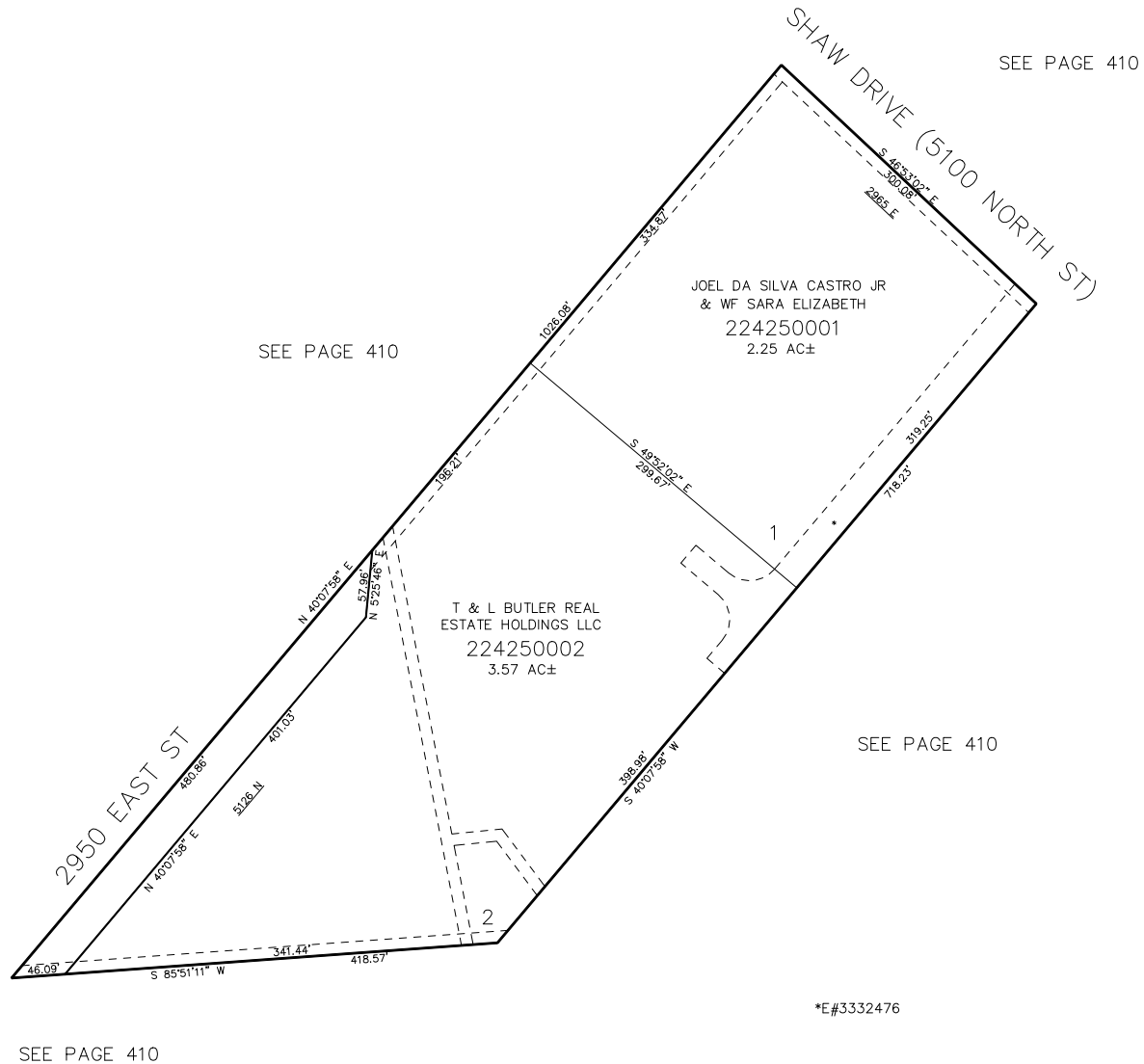


TAXING UNIT: 36

IN WEBER COUNTY
SCALE 1" = 80'



10' UTILITY & DRAINAGE EASEMENTS EACH
SIDE OF PROPERTY LINES AS INDICATED
BY DASHED LINES EXCEPT AS OTHERWISE
SHOWN.

FOR COMPLETE SURVEY DATA SEE
ORIGINAL DEDICATION PLAT IN
BOOK 97, PAGE 75 OF RECORDS.